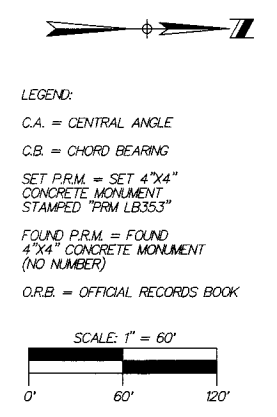
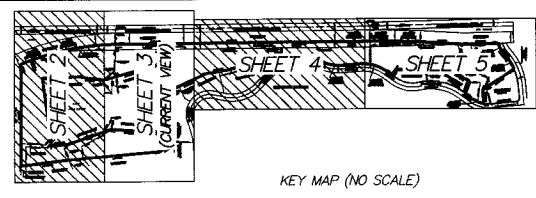
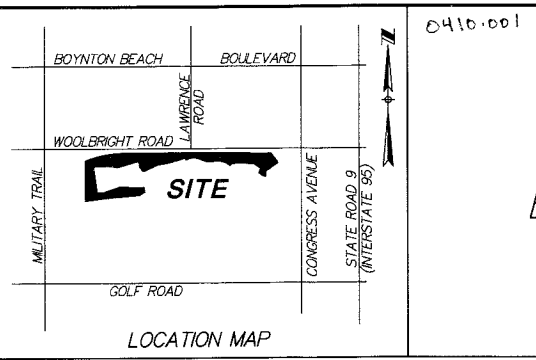


QUAIL RIDGE GOLF AND COUNTRY CLUB

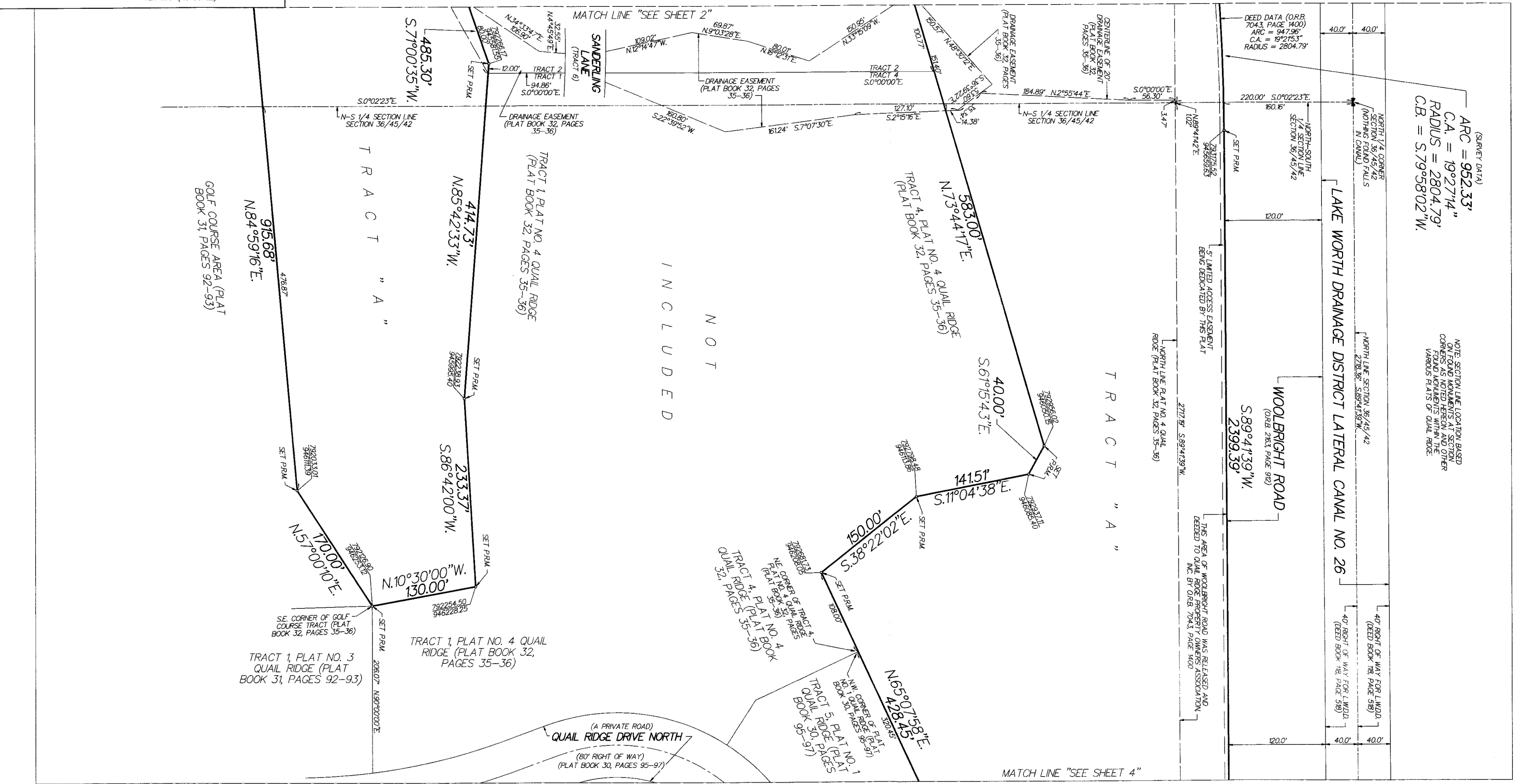
(A PORTION OF THE QUAIL RIDGE GOLF & COUNTRY CLUB, PUD)
 BEING A PORTION OF SECTION 36, TOWNSHIP 45 SOUTH, RANGE 42 EAST, A PORTION OF SECTION 31, TOWNSHIP 45 SOUTH, RANGE 43 EAST AND A REPLAT OF A PORTION OF PLAT NO. 4 QUAIL RIDGE (PLAT BOOK 32, PAGES 35 AND 36), A PORTION OF PLAT NO. 5 QUAIL RIDGE (PLAT BOOK 32, PAGES 51 AND 52) AND A PORTION OF PLAT NO. 11 QUAIL RIDGE (PLAT BOOK 35, PAGES 149 AND 150) BEING IN SECTION 36, TOWNSHIP 45 SOUTH, RANGE 42 EAST AND SECTION 31, TOWNSHIP 45 SOUTH, RANGE 43 EAST, PALM BEACH COUNTY, FLORIDA.

MAY 2010



THIS INSTRUMENT WAS PREPARED BY PAUL D. ENGLE IN THE OFFICE OF O'BRIEN, SLATER & O'BRIEN, INC., 955 N.W. 17TH AVENUE, SUITE K-1, DELRAY BEACH, FLORIDA 33445 (561) 276-4501 LB #353; E-MAIL: pengle@osobrien.com

SHEET 3 OF 5



(SURVEY DATA)
 ARC = 952.33'
 C.A. = 19°27'14"
 RADIUS = 2804.79'
 C.B. = S.79°58'02"W.

NOTE: SECTION LINE LOCATION BASED ON QUAIL RIDGE SECTION CORNERS AS NOTED HEREON AND OTHER FOUND MONUMENTS WITHIN THE VARIOUS PLATS OF QUAIL RIDGE.

THIS AREA OF WOODBRIGHT ROAD WAS RELEASED AND DEEDED TO QUAIL RIDGE PROPERTY OWNERS ASSOCIATION INC. BY O.R.B. 7043 PAGE 1400

MATCH LINE "SEE SHEET 4"